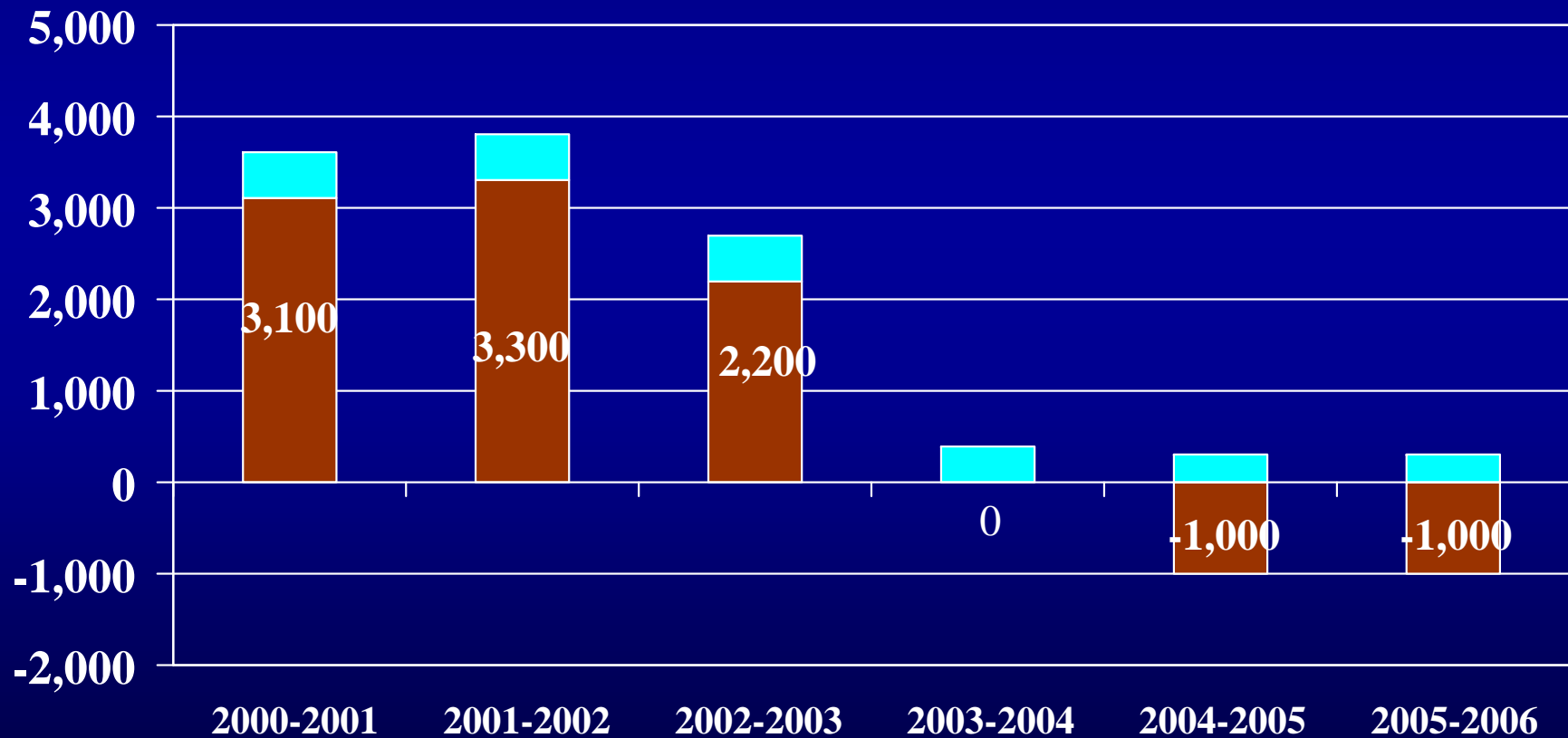


Cape Cod Economic Summit

October 26, 2007

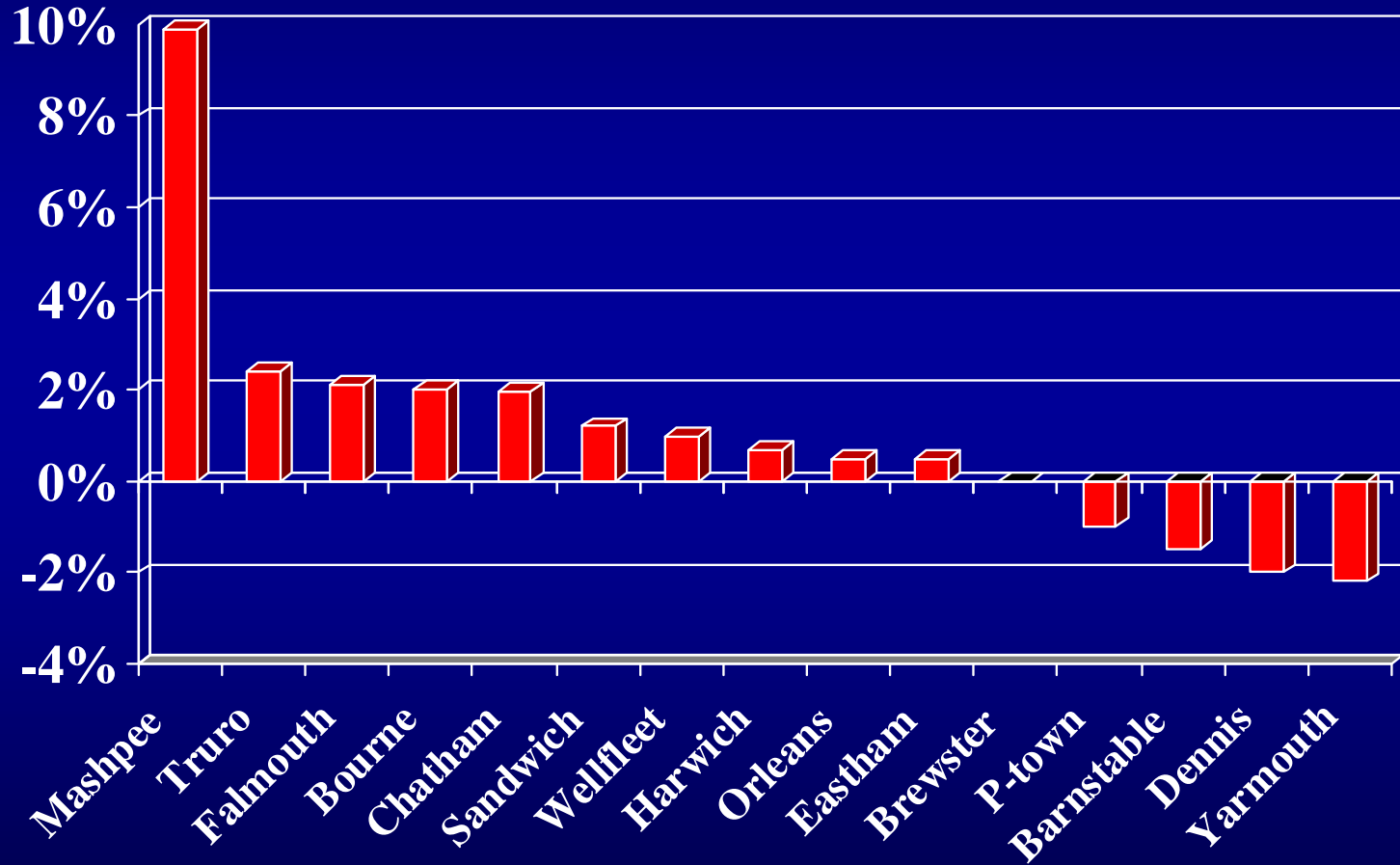
Cape Cod Net Migration & Growth Trends 2000-2006

■ From/To Other Counties ■ Immigration

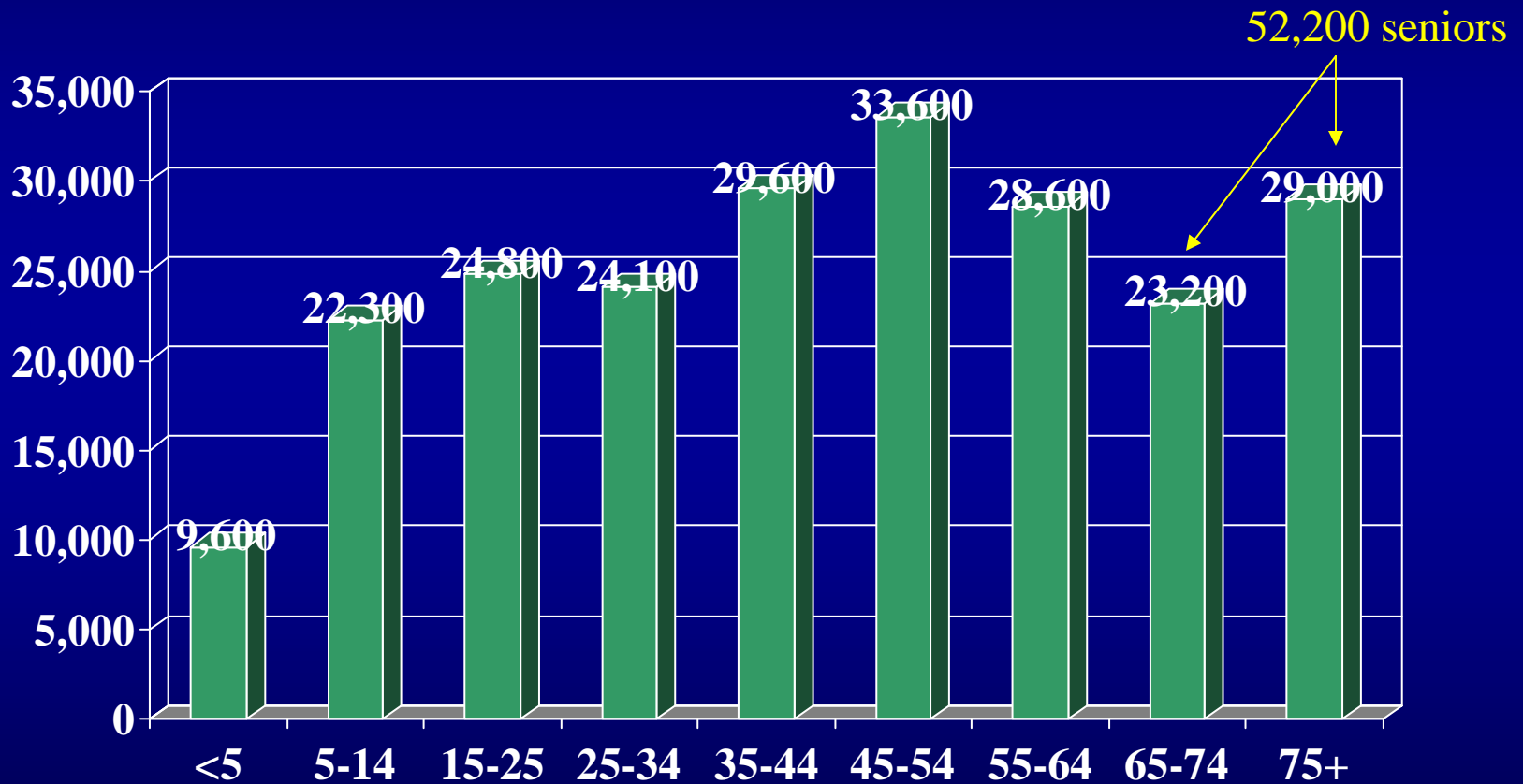


Population Growth by Town

2000-2006



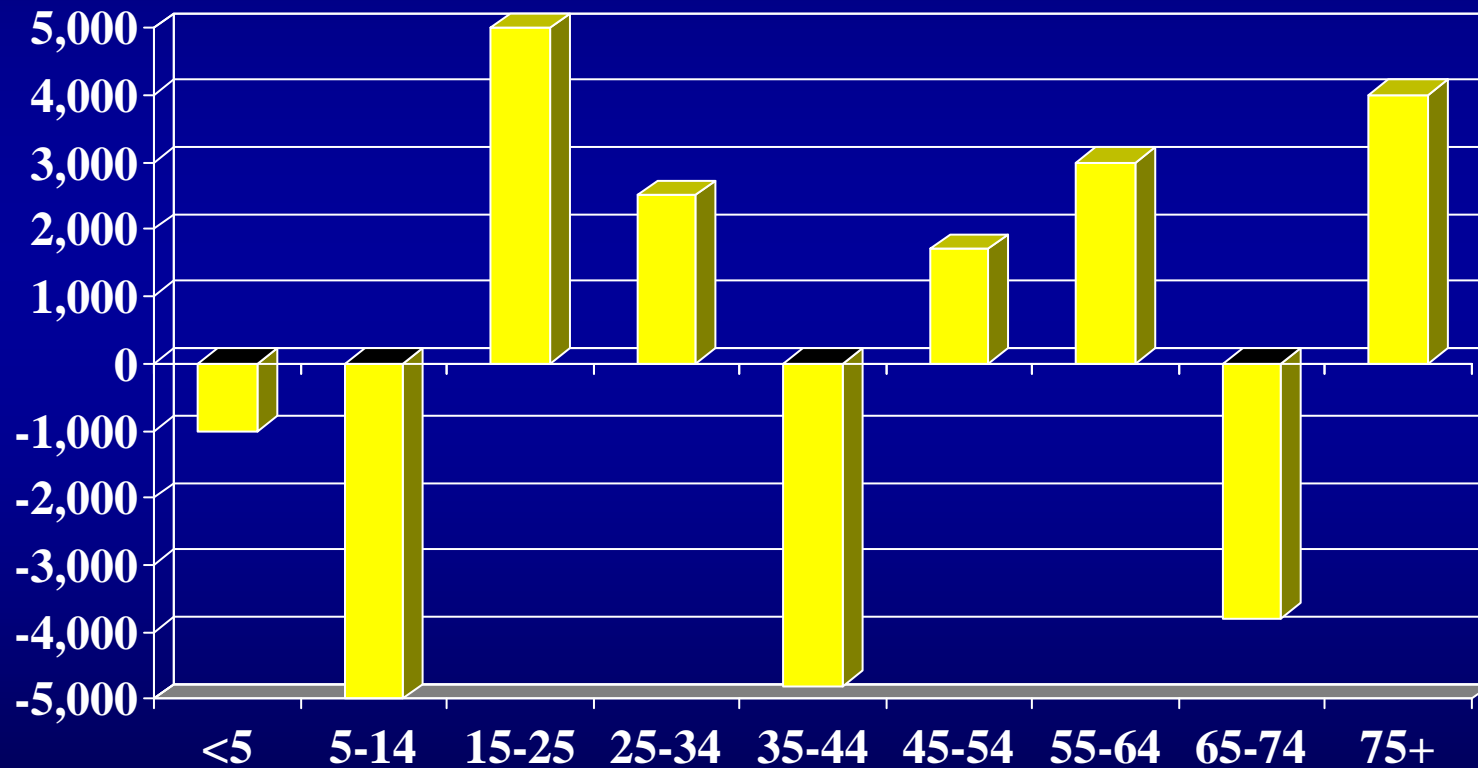
Year-Round Resident Population by Age Cohort – 2006



Total 2006 Population = 224,800

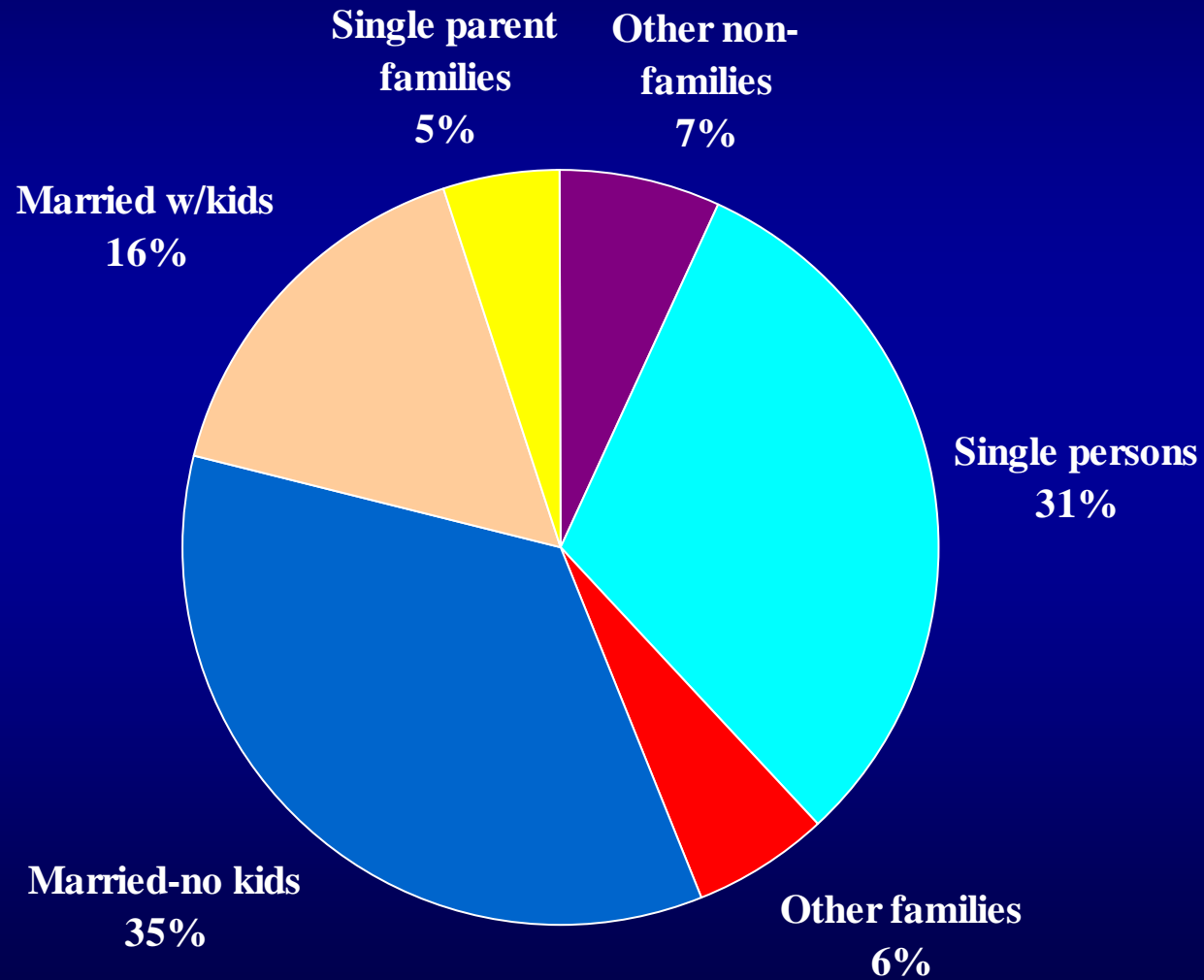
Population Change 2000-2006

(Loss of young families and early retirees)



Cape Cod Households by Type

2006: 155,000



IMPLICATIONS